



# KATANNING FOR FAMILIES ITINERARY

meet me in...  
**Katanning**

## Suggest 1 to 2 days

Here is our list of tried and tested activities for some family fun in Katanning.

**Distance from Perth:** 288 kilometres, approximately three hours' drive.

### When to go:

**Jan - Mar:** Warm to hot temperatures. Katanning Harmony Festival in March.

**Apr - Aug:** Milder temperatures, cooler evenings. A great time to self-drive the public art silo trail, base yourself here and take a day trip to visit the Frankland wine region, climb Bluff Knoll or the Skywalk at Castle Rock. Taste Great Southern in May.

**Sep - Dec:** This is the most popular time to visit Katanning, with warm temperatures and a profusion of wildflowers. The Great Southern Treasures Bloom Festival runs during September and October to celebrate wildflower season. October heralds the annual Agricultural Show, followed by Christmas on Clive Twilight Markets in December.

**All year:** The Katanning Farmers Markets are held on the third Saturday of every month. The Katanning Pool is open from November to March.

Tick off each place you have visited!

## ALL AGES PLAYGROUND

Family fun in Katanning starts at the All Ages Playground which is suitable for big kids and little kids too.



## KATANNING MINIATURE RAILWAY

For train enthusiasts the Katanning Miniature Railway is a must.



## KATANNING LAKESIDE ECO CAFÉ & ICE CREAMERY

Enjoy delicious ice-cream at the Katanning Ice creamery, Piesse Park, where you can walk around the lake & perhaps spot a long necked tortoise.



## THE DAILY GRIND CAFÉ

Eat famous local Malay satay & curry puffs from The Daily Grind Café, or experience the all day buffet with Ikhwan Food Van on Thursdays. 5 Taylor Street.



## KATANNING SALEYARDS

See the fascinating process for sheep being auctioned every Wednesday at the Katanning Saleyards and try to keep up with the Auctioneer! Meet George the ram and find out the story of the friendly sheep he is in honour of.



## KATANNING MUSEUM

Enter the world of a school room in 1900 at the Katanning Museum..



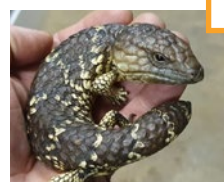
## KOBEELYA

Check Out Kobeelya, where heaps of country kids came to board and kept their horses in the paddock next door (still called the Horse Paddock).



## SWAGS AND WAGS

Visit Swags and Wags. They have a great collection of reptiles and fish. See what snakes and lizards you can identify.



## LAKE EWLYAMARTUP

Bring your canoe and have a paddle on Lake Ewlyamartup. There are 95 species of birds that use this lake. Try and spot the endangered hooded plover.



## COUNTRY STAY

Have a country stay and toast marshmallows and check out the amazing night sky.



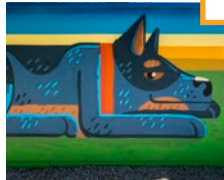
## WILDFLOWERS

Find wildflowers in spring at Police Pools, Lake Ewlyamartup and O'Callaghan Park. You can pick up a Wildflowers of Katanning brochure at the CRC so you can learn the names of local orchids.



## FORM PUBLIC SILO TRAIL

See all the cool art that is part of the FORM Public Silo Trail. Which is your favourite?



## KATANNING TAKE AWAYS

Beg for some take-away for a taste of Katanning; You can enjoy Malaysian, Thai, Vietnamese, Chinese, café fare, bakery goods or counter meals.



## HIT THE SHOPS

Hit the shops. Style & Leaf on Clive Street opposite Woolworths is hard to beat for a beautifully curated collection of gifts and homewares and some fun stuff for kids. The Regional Retailers Building on Austral Terrace has a range of women's ware, workwear and giftware also. Zaniacs on Austral Terrace is an Aladdin's Cave of anything and everything you can think of. There are also a number of great Op Shops in town.



## GOLF

Have a hit of golf all year round on the superb 18 hole course, with fully grassed and reticulated fairways and white sand greens then hit the pool for some laps.



## TRACTORS

Drive past McIntosh to see some enormous tractors and machinery. See if you can guess what they are worth? Do you know what they are used for? They also have some great replica toys for sale if you want to take a bit of the country home with you.



## CORDIAL BAR

Let Mum & Dad have a relax at the Cordial Bar, downstairs at the Premier Mill.



## STIRLING RANGES

If you have more than a day take a trip to the Stirling Ranges to climb the highest park in the south of the State, or challenge yourself to the Castle Rock Skywalk, Porongurup.



### Private Tour

If you would like to know what the locals know then book a private tour with Kartanup Tours. Contact 0427 212 388.

### Katanning Hub CRC & Visitors Centre

42 Austral Terrace, Katanning

0477 493 141

Monday to Friday 9:00am – 4:00pm.

Closed Saturday to Sunday.

### Helpful Links

<https://www.visitkatanning.com.au>

<https://www.katanning.wa.gov.au>

<https://greatsouthern treasures.com.au>

<https://www.katanninghub.com/katanning-accommodation>

<https://www.katanninghub.com/katanning-attractions>

<https://lostkatanning.com>